



California Department of
Parks and Recreation

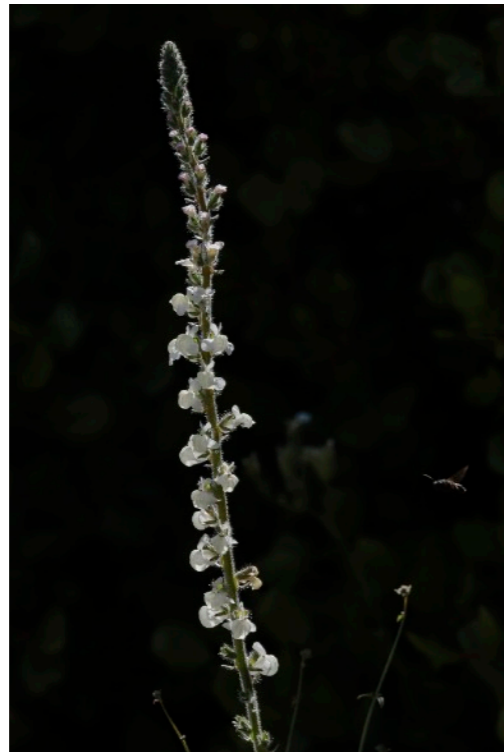
Cuyamaca Rancho State Park Wildflowers

2019
Updated 07/25

California State Parks supports equal access. Prior to arrival, visitors with disabilities who need assistance should contact the park at **(760) 765-3020**. If you need this publication in an alternate format, contact **interp@parks.ca.gov**.

All photos courtesy of California State Parks. © 2019 California State Park.

White flowers



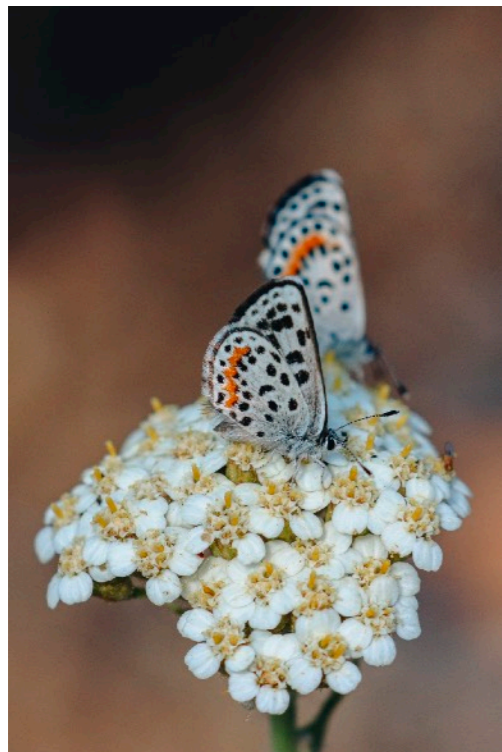
Coulter snapdragon



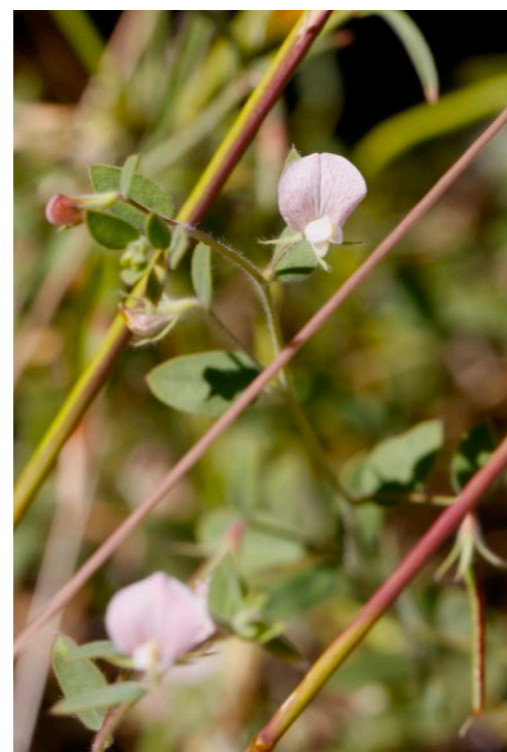
White sage



Honeysuckle



Woolly yarrow



Spanish lotus



Shy mariposa lily



Chalk dudleya

White flowers



Narrow-leaf milkweed



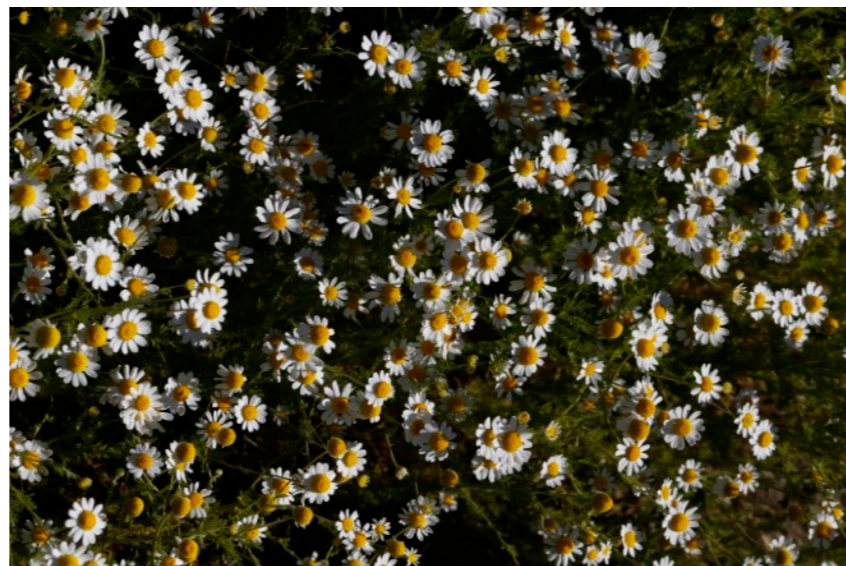
Indian milkweed



California buckwheat



Morning-glory



Mayweed



Elderberry

Yellow flowers



Coast baby stars



Wallflower



Slope monkeyflower



Seep monkeyflower



Weed mariposa lily



Evening primrose

Yellow flowers



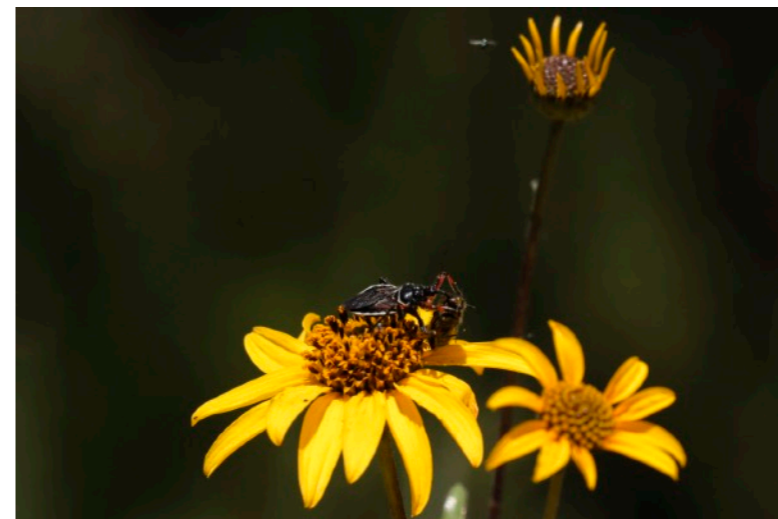
Golden yarrow



Gum plant



Goat's beard



Slender sunflower

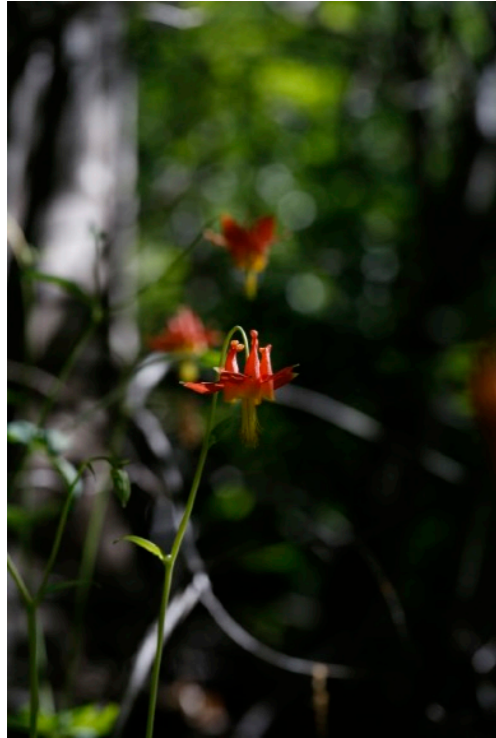


Humble lotus



Silver-leaf lotus

Orange and red flowers



Scarlet columbine



Grand collomia



Scarlet monardella



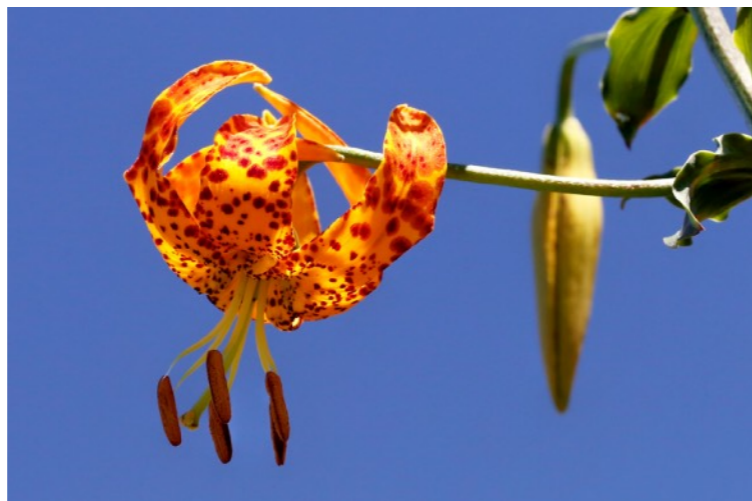
Thread torch



Bush penstemon



Scarlet larkspur



Humboldt lily



California fuchsia



Paintbrush

Pink flowers



Splendid mariposa



Turkish rugging



Wine-cup clarkia



Checkerbloom



Wild rose



American vetch



Wreath plant

Blue and purple flowers



Grape-soda lupine



Fleabane daisy



Foothills penstemon



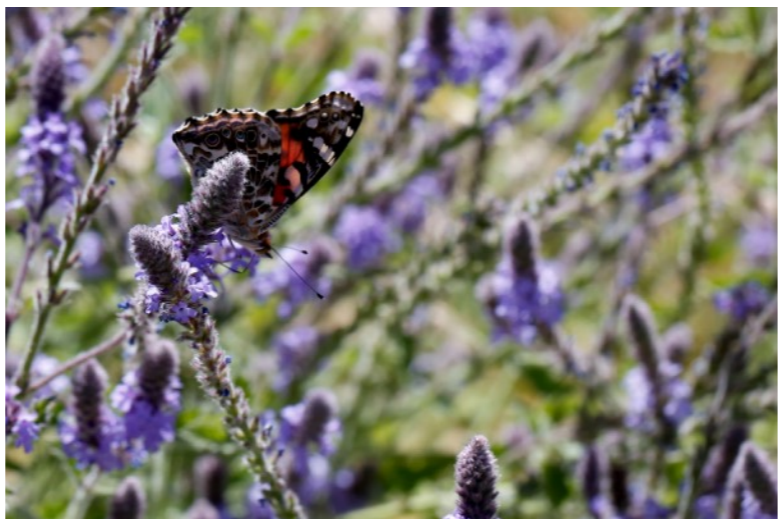
Sapphire woolly-star



Chaparral nightshade



Parry larkspur



Western vervain



Chinese houses

Common throughout the park

- Coulter snapdragon
- Honeysuckle
- Woolly yarrow
- Spanish lotus
- Narrow-leaf milkweed
- Indian milkweed
- California buckwheat
- Morning-glory
- Elderberry
- Coast baby stars
- Slope monkeyflower
- Golden yarrow
- Gum plant
- Goat's beard
- Humble lotus
- Grand collomia
- Bush penstemon
- California fuchsia
- Paintbrush
- Splendid mariposa lily
- Wild rose
- American vetch
- Wreath plant
- Fleabane daisy
- Sapphire woolly stars
- Chaparral nightshade

**Suggested Trails: Azalea Glen/Azalea Loop,
Cold Spring, Juaquapin**

Meadow area wildflowers

- Mayweed
- Thread torch
- Wine-cup clarkia
- Checkerbloom
- Parry Larkspur
- Western vervain

Suggested Trails: Minshall, Los Caballos, Azalea Springs Fire Road

Rocky areas and slopes

- White sage
- Shy mariposa lily
- Chalk dudleya
- Weed mariposa lily
- Slender sunflower
- Silver-leaf lotus
- Scarlet monardella
- Scarlet Larkspur
- Humboldt lily
- Turkish rugging
- Foothills penstemon

Suggested Trails: Cold Spring, Harvey Moore, Conejos

Shaded areas

- Wallflower
- Grape-soda lupine
- Chinese houses

**Suggested Trails: Azalea Glen/
Azalea Loop, Green Valley Falls**

Wetland/ Riparian

- Evening primrose
- Seep monkeyflower
- Scarlet Columbine

**Suggested Trails: Azalea loop,
Azalea Spring Fire Road, Cold
Stream**